



2

**FACT-CHECKING**



**Watch/Discussion Party**  
**Crash Course: Navigating Digital Information**

**Episode 2: FACT CHECKING**



# **League of Women Voters Mission**

Empowering Voters.  
Defending Democracy

# **League of Women Voters Vision**

We envision a democracy where every person has the desire, the right, the knowledge and the confidence to participate.

# Kittitas County LWV

- Established in 1968
- Membership open to anyone age 16 and older
- Website: <https://kittitasleague.org>
- YouTube Channel: [LWV Kittitas Channel](#)
- This program will be archived on YouTube, so if you do not want to be on the video, turn your camera off and rename yourself.

# Katherine Murphy

- League member since 2017
- Trained since high school in research, journalism, debate, technical writing
- BA Anthropology
- MS – Human-Centered Design & Engineering
- 40+ years of patient advocacy

# DISCUSSION QUESTION

How can I make the internet a more positive force in my life and in the lives of others?

# **We Need to Ask**

- Who shared this site with you?
- Why did this source share this site with you?
- What is being asserted?
- How did they back this up?



# Real Data is Critical

“Regardless how we feel about a topic, we need to have discussions with real data and real cost/benefit analysis. Better information makes for better decisions.”

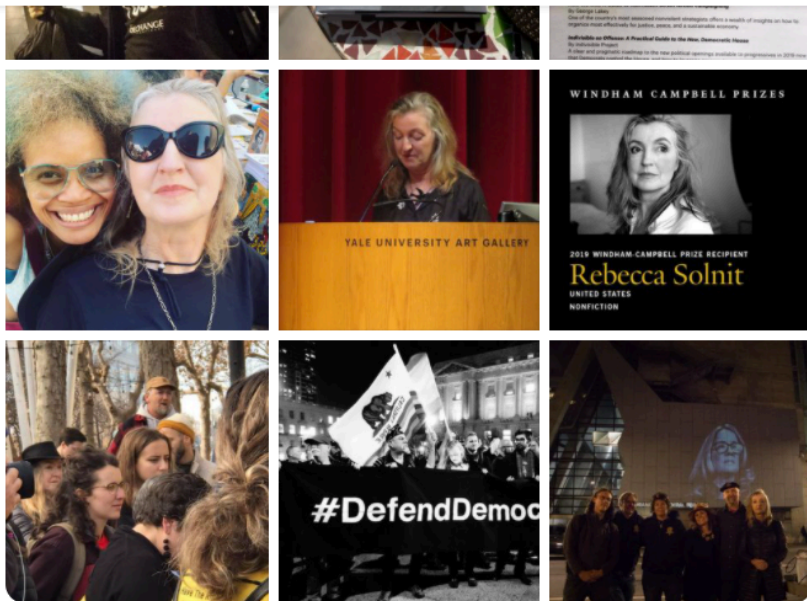
John Green, Crash Course, Navigating Digital Information, Ep. 2, Fact Checking

**Fact Checking**

**Texas Energy Grid**



Rebecca Solnit



## Friends

[See All Friends](#)

1 mutual friend



Margaret  
Swedish

Message



Rebecca Solnit

February 16 at 8:53 AM · 🌐

From my ever-brilliant friend [Pam Kingfisher](#)

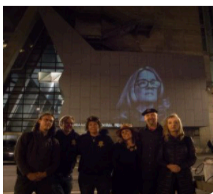
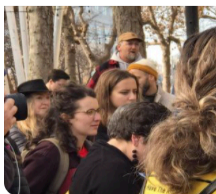
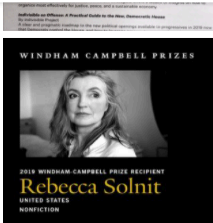
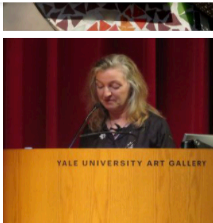
### North American Electric Power Grids





# Rebecca Solnit

 **Message**



## Friends

[See All Friends](#)

1 mutual friend



**Margaret  
Swedish**



## Pam Kingfisher

February 16 at 8:41 AM · 🌐

This is a good time to note that the electrical grid in Texas was deregulated, privatized, and removed from interconnected networks to avoid federal regulation and increase profits to a small number of wealthy individuals. (I learned this living in TX, it's so bizarre)



   722

10 Comments 452 Shares



 Like



 Share

[View 6 more comments](#)



**Stephen Hassett**

h/t to **Scott Pilutik** for this source

<https://www.texastribune.org/.../explainer-why-does.../>



TEXASTRIBUNE.ORG



# Skeptical vs. Cynical

Skeptical	Cynical
Not easily convinced	Generally distrustful of everyone else's motives
Improves critical thinking & judgment	Clouds judgment with negativity & suspicion

# Living in Paradox Takes Practice

- You can't believe everything you read
- You must also continue to check up on sources that have been trustworthy in the past
- Sometimes we make assumptions based on our preexisting worldview.

# You Are Not Going To Believe...

- Cartoon created by The Oatmeal
  - Matthew Inman
  - Sources cited
- Dunjin Dan created a video where you can listen to and watch this comic:  
[https://youtu.be/m\\_aTN3yKOkY](https://youtu.be/m_aTN3yKOkY)





3

**LATERAL**

**READING**

**NEXT WEEK**



# Thank You

- To view again, visit our YouTube channel, [LWV Kittitas Channel](#)
- For slides/links, visit our blog at <https://kittitasleague.org>
- To continue the discussion, visit our League of Women Voters of Kittitas County on Facebook, @Kittitas LWV on Twitter, or @kittitas\_league on Instagram